

AQUARIUS d.o.o. Ljubljana
Ecological engineering





ABOUT US

Aquarius is a smaller, dynamic company, whose employees are dedicated to providing nature conservation and environmental protection solutions in spatial planning, development projects and industrial pollution. We produce reports concerning comprehensive environmental protection in environmental and nature conservation approval procedures, opinions on the acceptability of implementation of plans and project as well as environmental permits.

We are a team of highly experienced and reliable experts in natural sciences, engineering and social sciences, proficient at delivering a high level of environmental protection and producing dependable and accurate reports.

We are qualified to manage comprehensive and demanding environmental projects that include coordinated efforts and cooperation between larger project groups.

The staff has mastered the use of the geographic information system (GIS) so as to ensure the highest quality processing of various spatial information in vector form, digitalization of data and delivery of cartographic contents, which are indispensable to more demanding projects.

We provide our service independently or in cooperation with our partners and contractors, depending on the type, characteristics and requirements of a project. We are proud to be associated with verified and experienced experts from different domains.

Our business partners appreciate the quality of our work and our commitment to delivering it within the agreed deadlines.

In our 25-year history we have cooperated with over 100 clients and have rendered more than 500 services that have been helping to protect the living and natural environment on all levels, while enabling our client to carry out their projects.

CONTACT

Aquarius ekološki inženiring d.o.o. Ljubljana
Cesta Andreja Bitenca 68
1000 Ljubljana
SLOVENIA

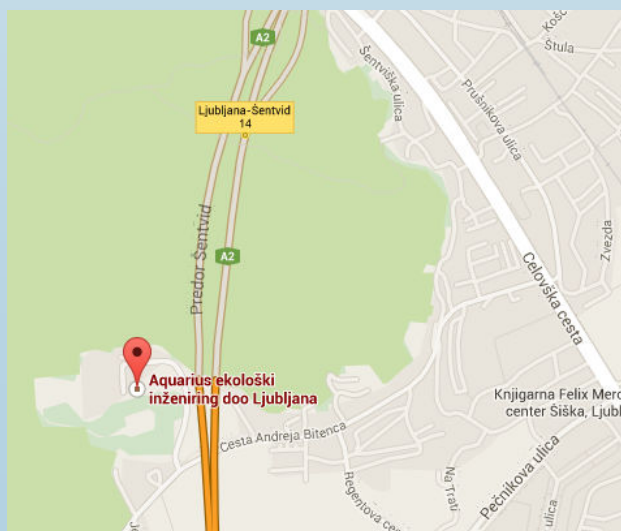
Phone: +386 1 518 72 22

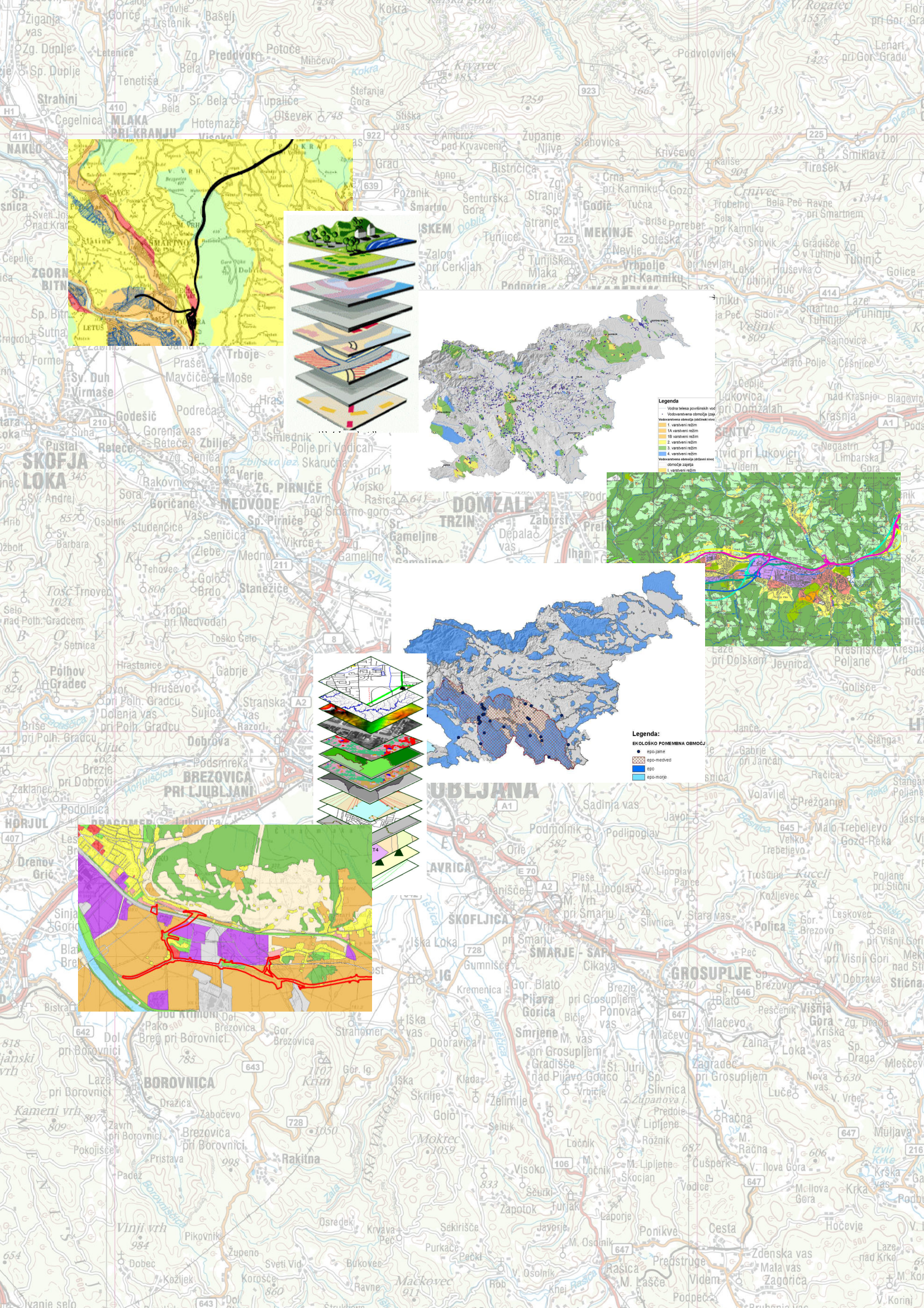
+386 1 518 72 23

Fax: +386 1 518 72 24

E-mail: info@aquarius-lj.si

Web page: www.aquarius-lj.si





OUR SERVICES

ENVIRONMENTAL IMPACT ASSESSMENTS

An environmental impact assessment is the cornerstone of an environmental impact assessment procedure. The kinds of projects that are subject to an EIA are determined on the basis of the EIA Directive (Directive 85/337/EEC). As part of the EIA provision, and upon agreement with the client, we provide all required analyses, measurements, inventories or expert opinions that are required to issue an environmental approval.

STRATEGIC ENVIRONMENTAL ASSESSMENTS

A strategic environmental assessment has to be submitted during the comprehensive impact assessment procedure for the assessment of plans, programmes, master plans and spatial and other regulations. The procedure is subject to the decision of the ministry competent for the environment on the basis of the SEA Directive (Directive 2001/42/EC).

SERVICES RELATED TO NATURE CONSERVATION AND BIODIVERSITY

Our company employs five experienced biologists and, if needed, other specialists for particular species and groups may be included in the workgroup. Our services in nature conservation comprise the following:

- Assessment of acceptability of impacts caused by the execution of plans and activities affecting Natura 2000 sites and protected areas (Appropriate assessment)
- Guidelines on the design of crossing facilities for wild animals
- Guidelines on the siting of buildings from the perspective of conservation of the natural environment
- Expert bases for replacement habitats
- Taking of inventory of flora, fauna and habitat types, including mapping
- Assessment of risk to nature prior to introduction or repopulation of alien plants and animals or breeding of alien wild animals
- Expert opinions on project impacts on the natural environment (water, flora, fauna, habitat types)
- Natural environment monitoring plans; monitoring of the status from the perspective of nature

GIS-ANALYSES INCLUDING PRODUCTION OF MAPS TO DISPLAY ENVIRONMENTAL ISSUES

- GPS collection of data in the field
- Conversion of data into vector form
- Spatial and other GIS-analyses
- Digital maps displaying environmental and other content at various scales
- Printing of maps of different formats (up to 610 mm in width)

CONSULTING AND OTHER SERVICES IN ENVIRONMENTAL PROTECTION

- Consulting during opinion and approval procedures
- Studies of options – environmental aspect
- Initiatives for spatial plans of options – environmental aspect
- Feasibility/Eligibility studies – environmental aspect
- Expert bases in agriculture
- Guidelines for draughtsman for the purpose of production of plans
- Guidelines for draughtsman from the perspective of environmental protection for the purpose of project design
- Guidelines for draughtsman from the perspective of environmental protection for the purpose of construction site organisation plans
- Monitoring plans from the perspective of environmental protection

REFERENCES

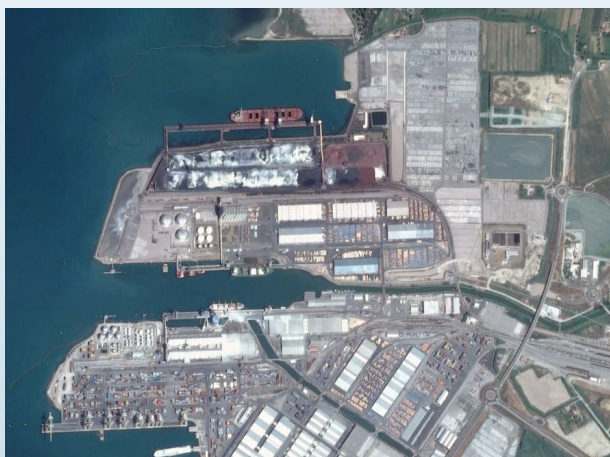
Expert bases on the navigability of the Ljubljana river



CONTRACTING ENTITY: Regional development agency of the Ljubljana urban region

The project comprises the establishment of a navigable route on the Ljubljana from Vrhnika to Ljubljana. For this navigable route, and with respect to conservation and safety requirements, several navigation regimes have been defined. The project group has tested potential solutions and has proposed a system of projects to ensure the navigable route on the Ljubljana is properly regulated and smooth operation is ensured, taking into account the impact on the development of the region in tourism, awareness raising and awareness of the natural and cultural landmarks of the area.

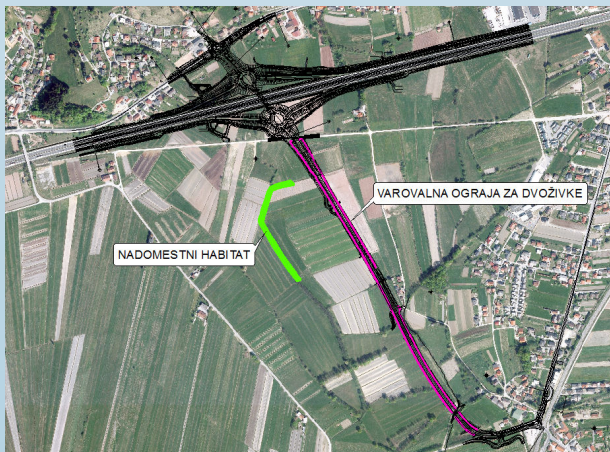
Strategic environmental assessment for the national spatial plan for a comprehensive spatial development of the International seaport in Koper



CONTRACTING ENTITY: Luka Koper, d. d.

The comprehensive development of the international seaport in Koper comprises both port activities (port, quays, berthing facilities, loading and unloading, warehousing, etc.) as well as all accompanying activities (customs, freight forwarding, etc.) with an emphasis on solving contact areas with the wider area, such as the contact with the city centre of Koper, the Škocjanski zatok nature reserve, the Ankaran border canal and similar. Our expertise has helped port activities integrate in the best possible manner into the natural and living environment.

Environmental impact assessment for the Brezovica motorway on-ramp



CONTRACTING ENTITY: DARS, d. d.

The basic aim on the new grade-separated on-ramp Brezovica is to solve the issue of inappropriate distribution of traffic flows on the Brezovica–Vrhnika regional road and the A1 motorway in the area of the existing Brezovica ramp. The project will serve to significantly reduce the load on the road network and provide improved road safety. In assessing environmental impact, the impact of the construction of the Brezovica ramp and bypass road on sensitive marshland environment has been examined; the project also included the development of a replacement habitat along the Na Golah canal as well as appropriate culverts for the migration of amphibians and small mammals.

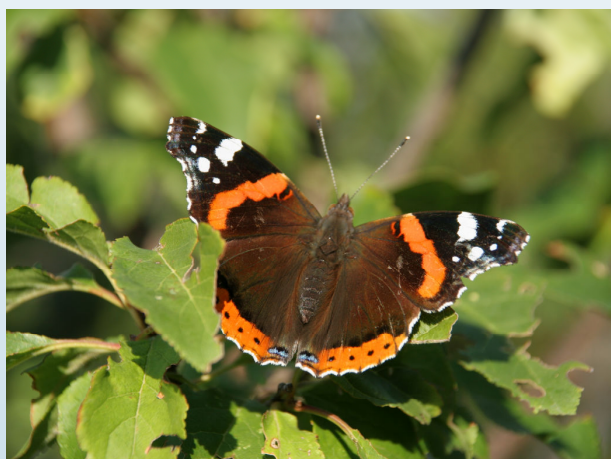
Strategic environmental assessment for the municipal detailed spatial plan for the Rogla cross-country skiing trails



CONTRACTING ENTITIES: Municipality of Zreče, Unior d.d.

At the cross-country skiing trails on Rogla, the project includes the construction of the start-finish area and the related trails and loops, the construction of a sports hotel, the construction of a tarmac road for rollerblading, the reconstruction of the existing parking, a catchment, a service facility and the legalisation of log-cabins and the expansion of the Planja pizzeria. Our efforts have helped ensure the recreational centre can coexist with the natural feature of the Pohorje.

Inventory of the habitat types and the species of the flora and the fauna at the area of the Portorož airfield for the purpose of the national spatial plan



CONTRACTING ENTITY: The Republic of Slovenia, Ministry of infrastructure and space

Portorož airfield is an international airport in Slovenia designed for smaller craft transporting passengers to the Slovenian Littoral. For the purpose of the planned development projects at Portorož airfield and to ensure air traffic safety, the presence of priority habitat types and habitats of protected plant species as well as inventories of plant and animal species have been carried out at the area of the planned development.

Environmental impact assessment for the projects within the »Flood protection measures in the Savinja river basin«



CONTRACTING ENTITY: The Republic of Slovenia, Ministry of agriculture and the environment

Projects that are subject to the assessment are aimed at providing flood protection measures for the urban areas of the City of Celje municipality. The plan of the project includes flood protection development along the Hudinja and the Voglajna rivers and the Sušnica South and Ljubečna dry retaining basins. The implementation of the project will improve the living conditions for the inhabitants of the area since flood risk will be significantly reduced, which is a threat to both the health and the property of people.

